

## Premium MS Polymer



# AS-4002 / AS-4002S Premier Construction Sealant

### Features:

- Excellent weatherability – 10-year warranty
- ASTM C920 (Class 50) compliant
- Paintable
- Low static charge – Less fluid-streaking
- No silicone oil – Non-staining on adjacent substrates
  - No isocyanate – No blistering
  - No solvent – No shrinkage
- Bonds most substrates without primer
  - Matte finish

### Product Specifications:

Curing system	: Moisture curing
Density	: 1.52 - 1.54 g/mL
Tack-free time	: 20 - 40 minutes
Tensile strength (ASTM D412)	: >0.7 N/mm <sup>2</sup>
Elongation at break (ASTM D412)	: >500 %
Movement capability (ASTM C719)	: ±50 %
Shore A hardness (ASTM C661)	: 20 - 30
VOC content (USEPA Method 24)	: <50 g/L
Application temperature	: 5 °C - 40 °C
Service temperature	: -20 °C - 90 °C
Shelf life	: 9 months (cartridge) 12 months (sausage)



Scan and learn



**Description:** A one-component, elastomeric joint sealant formulated with acrylic modified hybrid sealant, the premium grade of MS Polymer. The weatherability and UV resistance of the sealant is excellent, with much longer expected service life than other organic sealants in the market. The finishing is matte, less tacky, and with low electrostatic charge, thereby reducing fluid-streaking issues on façade cladding caused by air-borne dust particles. Besides, the formula is free of silicone oil, minimizing oil-staining or other building aesthetic issues caused by migration of silicone oil. Unlike polyurethane sealants, this sealant is free of isocyanate and solvent and thus no issues like blistering or shrinkage will occur. It also can adhere well to numerous substrates without primer, fast-curing, paintable with common water-based coatings, and it is a green product that complies with SCAQMD rule #1168 Low VOC limit.

**Applications:** Specially formulated to seal metal (e.g. ACP) and stone (e.g. marble) façade cladding due to its excellent weatherability and non-staining/less fluid-streaking characteristics. It is also recommended for sealing concrete joints like precast wall panel joints construction joints, control joints, expansion joints, and window frame perimeter sealing (PVC / Aluminum to concrete wall), both painted and non-painted surfaces. Other recommended applications include sealing of masonry, brickworks, anodized aluminum, stainless steel, porcelain, finished wood, coated metal, epoxy and polyester panels, uPVC, polystyrene, and many difficult substrates.

**Limitation:** Not recommended for constant water immersion, outdoor glass sealing, sealing substrates such as PE, PP, Teflon, Neoprene, and bitumen. Not paintable with alkyd, chlorinated, or oil-based paint.

**Available colors:** Matte black, matte grey & matte white

**Content:** 290 ml (cartridge), 600 ml (sausage)

**Carton quantity:** 20 cartridges / carton, 20 sausages / carton

## Applications:



• Aluminium Composite Panel Façade

• Solid Panel Metal Cladding

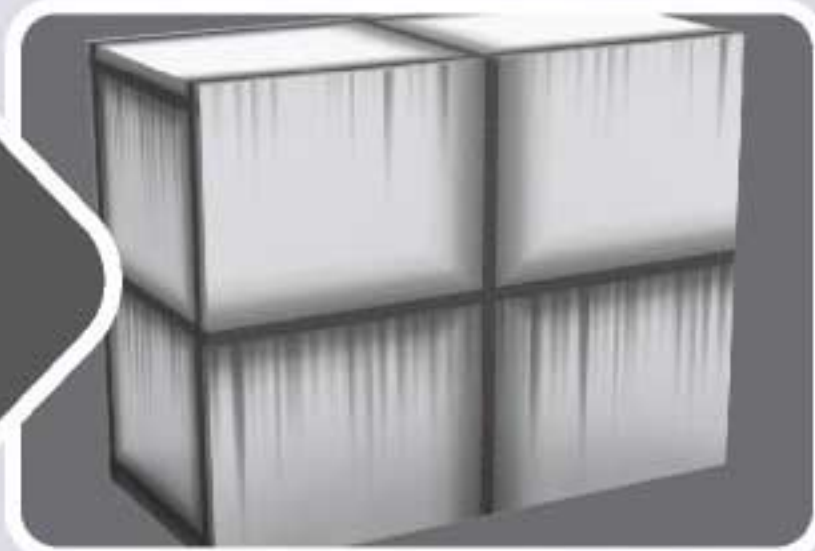
• Natural Stone Façade

• Concrete Joint

## Features:

### Known issues with other silicone / PU sealants

Fluid-streaking on façade cladding (Silicone)



Staining on natural stone façade (Silicone)



Not paintable (Silicone)



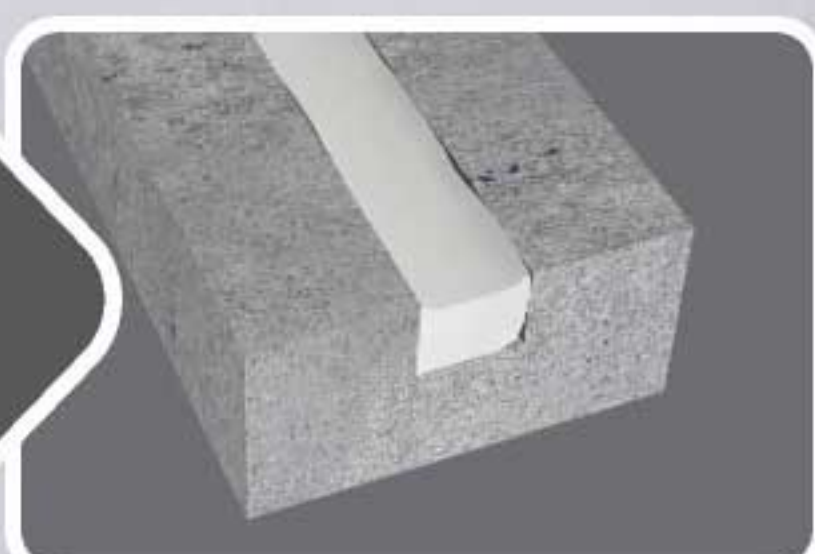
Sealant cracks over time (PU)



Blistering issue (PU)



Shrinkage after cure (PU)



### Problems solved with AS-4002

✓ Less fluid-streaking on façade cladding (Low static charge)



✓ Non-staining on natural stone façade (No silicone oil)



✓ Paintable (MS)



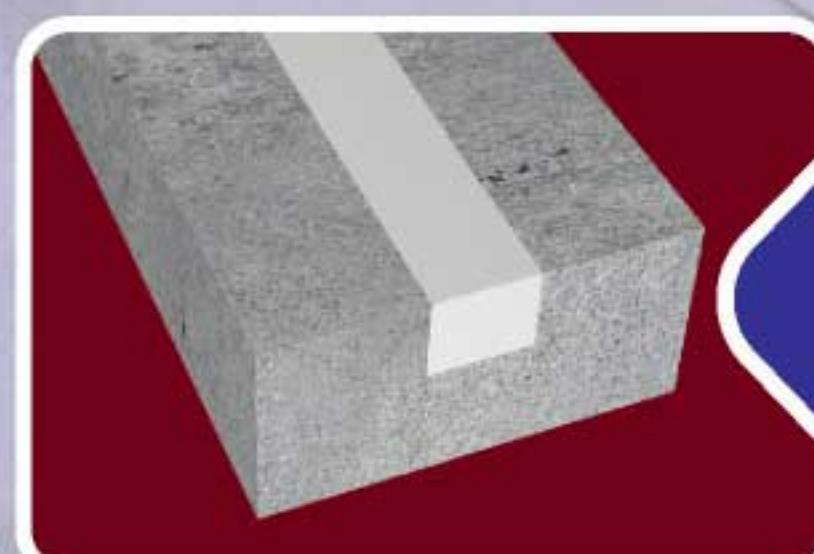
✓ No cracking (Excellent UV resistance)



✓ No blistering (No isocyanate)



✓ No shrinkage (No solvent)



Manufactured under ISO9001 & ISO14001 Management Systems

Distributed by:

Aalseal Australia  
[www.aalseal.com.au](http://www.aalseal.com.au)  
[sales@aalseal.com.au](mailto:sales@aalseal.com.au)  
 1300 AALSEAL