

RHINOZ

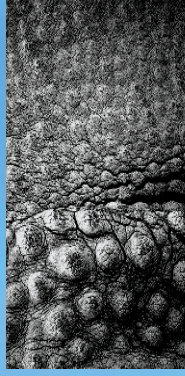
SAND STONE



RHINOZ Sand Stone

Natural Sand Textured Spray Paint





RF-126

RHINOZ

SAND STONE

Natural Sand Textured Spray Paint

An acrylic polymer mixed with fine sand for natural sand and stone texture and pattern creation. The high-quality organic pigment allows long lasting aesthetic to your wall and ceiling without fading and comes with selections of colors to choose. The paint provides good crack covering ability, long durability from both interior and exterior application, and good adhesion on various surfaces such as concrete, mortar, fiber cement, gypsum board, etc. It contains anti-microbial agent that prohibit growth of fungi and algae, for longer usage when exposed to weathering.

Application

1. Apply 2 coats of RHINOZ Sand Stone Base Tone using roller with 1-2 hours dry time in between coats.
2. Apply 2 coats of RHINOZ Sand Stone using sprayer or trowel with 1-2 hours dry time in between coats.
3. Leave to dry for 24 hours before applying 2 coats of RHINOZ Sand Stone Seal Coat with 1-2 hours dry time in between coats and leave to dry for 24 hours before usage.



RHINOZ FOOTPRINT

PROPERTY



Stronger and longer protection by merging with the surface, giving extra weather resistance property for both interior and exterior application.



Highly flexible to prevent cracking and peeling off due to structural movement.



Highly adhesive to allow application on various surface types such as concrete, fiber cement board, gypsum board, wood, metal, tiles, foam, etc.



Designed and produced using clean technology, formulated to be low VOC and free of odour, lead, mercury and cancer-causing substances, to ensure safety to users and environment.



Clean and hygienic with TROY antimicrobial agent which helps prohibiting growth of fungi, algae, and molds, keeping the beauty long lasting.

RHINOZ
ARCHITECTURAL COATING SYSTEM

DECOR

Arabian

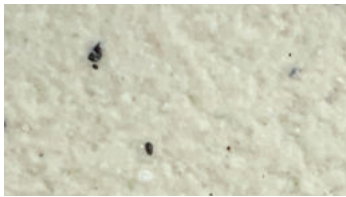
AB-10



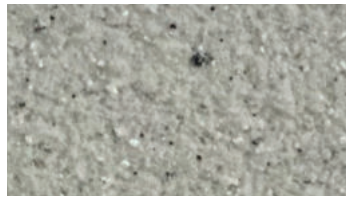
RF-126

RHINOZ SAND STONE

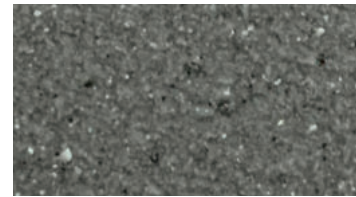
Arabian



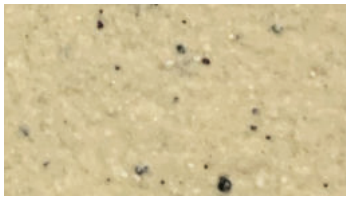
AB-01



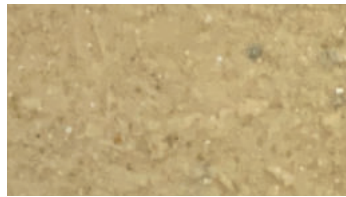
AB-02



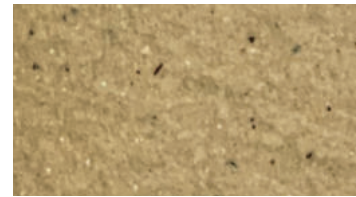
AB-03



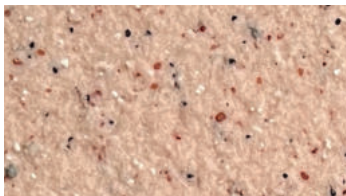
AB-04



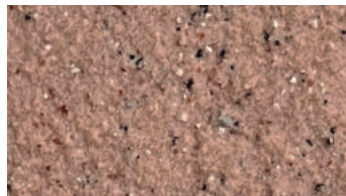
AB-05



AB-06



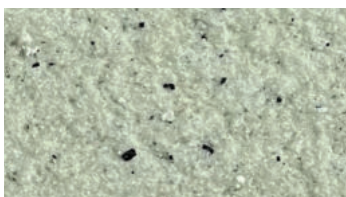
AB-07



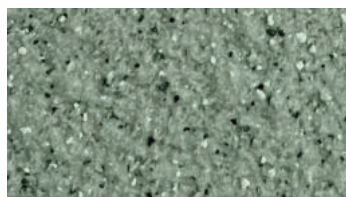
AB-08



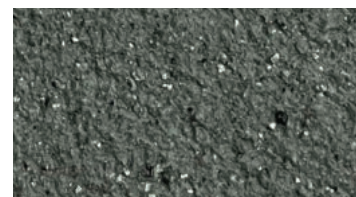
AB-09



AB-10



AB-11



AB-12

Mojave

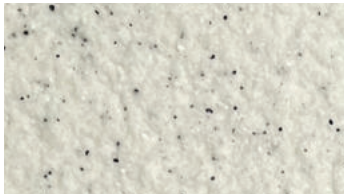
MJ-01



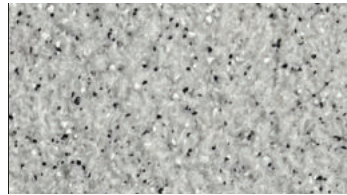
RF-126

RHINOZ SAND STONE

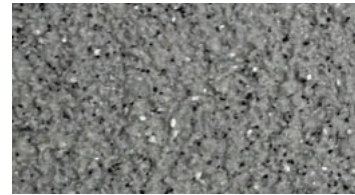
Mojave



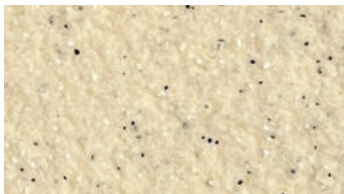
MJ-01



MJ-02



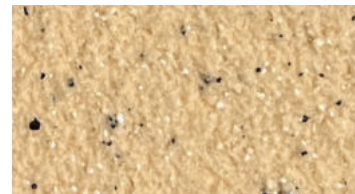
MJ-03



MJ-04



MJ-05



MJ-06



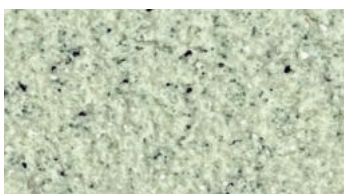
MJ-07



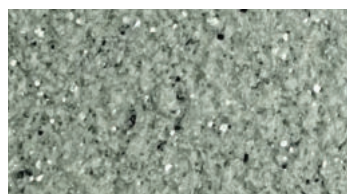
MJ-08



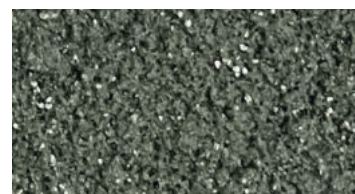
MJ-09



MJ-10



MJ-11



MJ-12

Mojave

Gobi

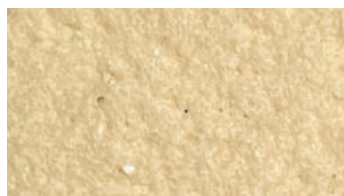
GB-10



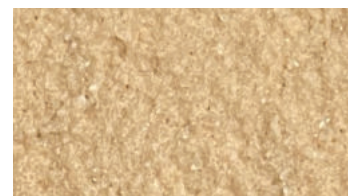
RF-126

RHINOZ SAND STONE

Gobi



GB-01



GB-02



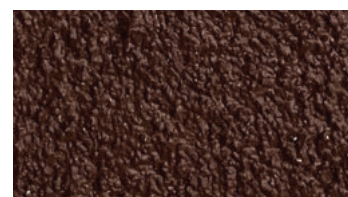
GB-03



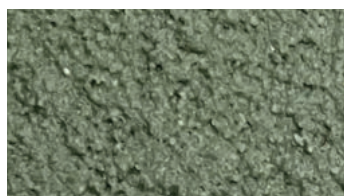
GB-04



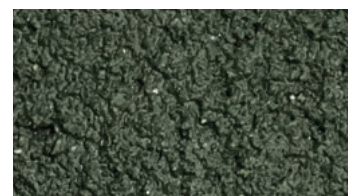
GB-05



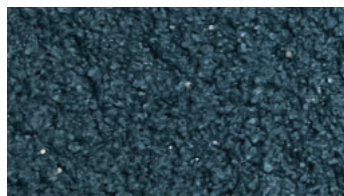
GB-06



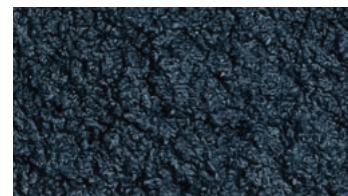
GB-07



GB-08



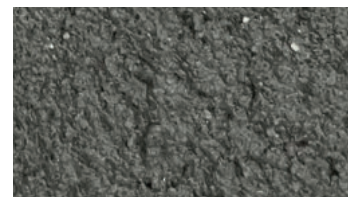
GB-09



GB-10



GB-11



GB-12



Muine

MN-12



MN-11



MN-02



MN-03

RF-126

RHINOZ SAND STONE

Muine



MN-01



MN-02



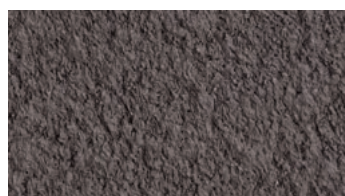
MN-03



MN-04



MN-05



MN-06



MN-07



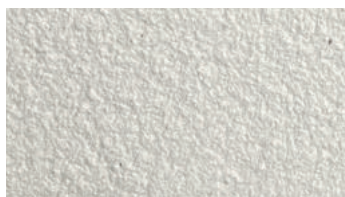
MN-08



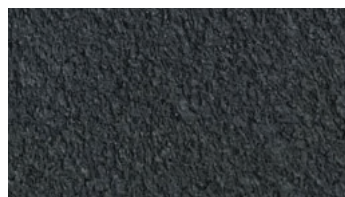
MN-09



MN-10



MN-11



MN-12



RF-126
RHINOZ
 SAND STONE

1st RF-144
 Sand Stone Base Tone

2nd RF-126
 Sand Stone

3rd RF-184
 Sand Stone Seal Coat

Step	Product	Tools	No. of Coat	Dry Time Between Coats	Coverage	Texture Pattern
1. Paint	RF-144 RHINOZ Sand Stone Base Tone	Roller/ Brush	1-2	1-2 hours	30-40 sqm/ gal/ coat at 100 microns	
2. Spray	RF-126 RHINOZ Sand Stone	Sprayer	2	1-2 hours	1.5-2.5 kg/ sqm/ 2 coats at 1-3 mm thickness	
3. Sealer	RF-184 RHINOZ Sand Stone Seal Coat	Roller/ Brush/ Sprayer	2	1-2 hours	10-15 sqm/ lit/ coat	

*Actual color may differ from the photo or print-out due to screen display and printing process.



RF-144 RHINOZ
 Sand Stone Base Tone

100% acrylic priming paint for extra adhesion and long-lasting performance without peeling



RF-126 RHINOZ
 Sand Stone

Acrylic polymer with fine sand to create natural sand stone texture for long lasting aesthetic with antimicrobial agent to prevent fungi and algae



RF-184 RHINOZ
 Sand Stone Seal Coat

Water - based clear sealer to protect the creation from water and maintain its aesthetic and performance for both exterior and interior without strong odour.



Blue Label Company Limited
 48/58 Moo 1, Ekachai Road, Kokkrabue Subdistrict,
 Mueang District, Samut Sakhon Province 74000
 TEL: 034-494-774 www.bluelabelgroup.com

