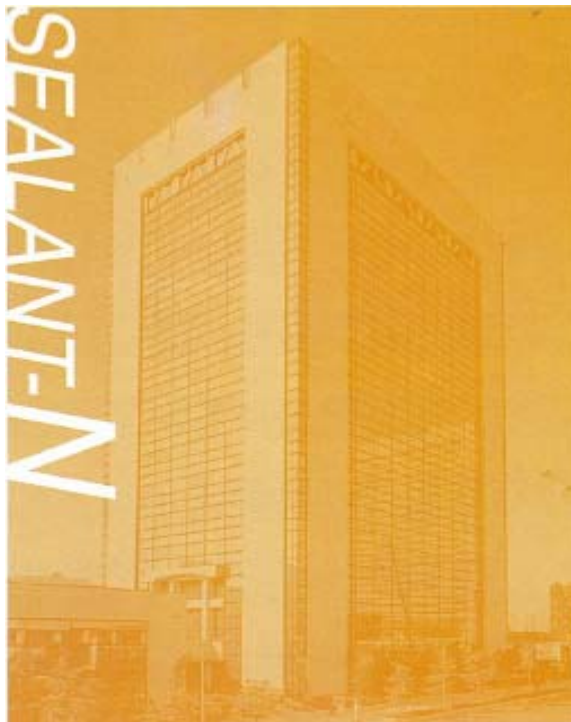


SEALANT-N**One-Component Neutral Silicone Sealant for Multipurpose Uses**

SEALANT-N : High performance neutral cure silicone rubber when exposed to moisture and humidity at room temperature. Due to its non-sag, non-flowable features, it may be applied overhead or on sidewall joint surface. It presents no offensive odor during curing and will not corrode metals. Discoloration of copper based metals may occurs when hermetically sealed. Moreover, it can adhere well on alkaline material such as mortar and white cement.

Color available :

Translucent/White/Black/Gray/LightGray/
Ivory/DarkIvory/DarkBrown/Aluminium

Packing : 300ml/cartridge

Product Description :

- One-component paste-like silicone sealant
- Superior adhesiveness on various materials
- As its neutral basis, no corrosion for many substances and low oxime odor
- General purposes for sealing and bonding with various types of materials
- Curing at room temperature and easy handling
- Weatherability resistance at -50 to 150°C
- Excellent elasticity



Shin-Etsu Silicone

Properties :

Items	Results	Test Method
Appearance	Paste	-
Viscosity Pa.s	-	-
Density 23c	1.04	JIS K-6249
Hardness shore A	20	JIS K-6249
Tensile Strength MPa	1.4	JIS K-6249
Elongation at break %	540%	JIS K-6249
Tact Free Time @ 23 degree C(Min.)	6 min.	JIS A-1439
Curing condition	Cured at Room Temperature	-

- Curing conditions : 23-25 degree Celsius, 50-55% humidity , 7 days

Standard testing complied with :

- ASTM C 920 Type S, Grade NS Class 25
- GB/T 14683-93 8020F,N
- JIS A 5758-97 G-F 20LM
- BS 5889 : 1989 Type B

Suitable for sealing :

- Glass - Metals - Sashes - Marbles
- Prefab housing units - Suspension construction
- Mortar - Stone - Plastics

Usages :

- Using sand paper or a solvent thoroughly clean the surface to remove oil dirt. Be aware when using with plastics.
- Cutting nozzle and insert into a caulking gun. If possible, use all at once.

Handling Precautions :

- It reacts with moisture in the air and begins to cure at the surface. Consequently, the cure speed will vary according to the temperature and humidity of environment.
- Please note that it may not cure if it comes in contact with flux or certain materials.
- When using with air gun, be sure to set the pressure at a safe and proper level. Pressure should be exceed 0.2-0.3 Mpa.

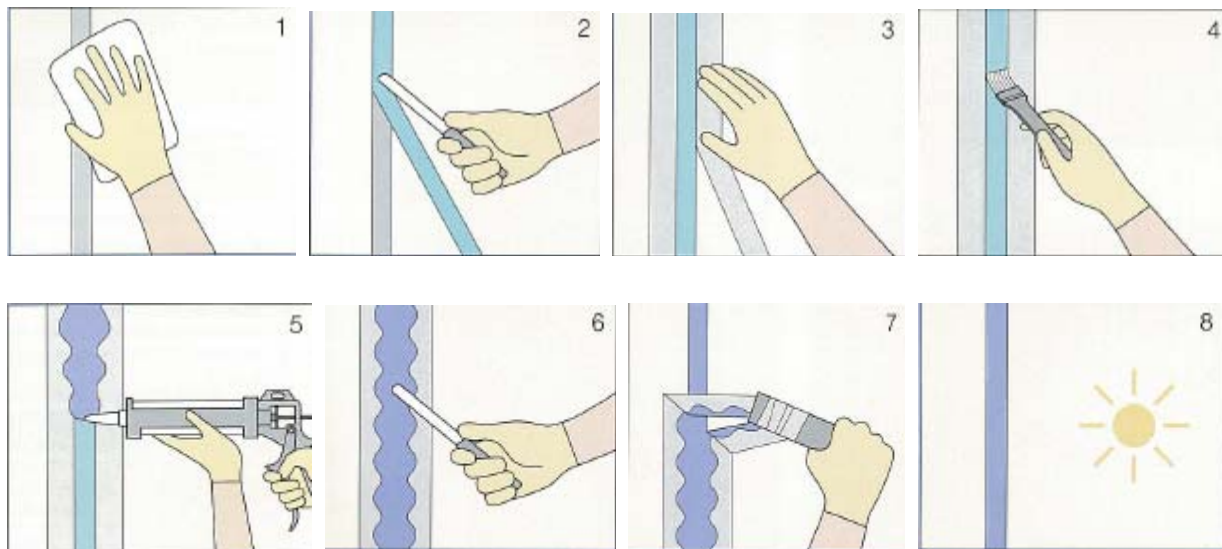
Safety and Hygiene

- Be sure to provide adequate ventilation area when using
- Be careful not to rub the eyes with hands when using. Please take the appropriate wearing glasses.
- Keep out of children
- Please read Material Safety Data Sheet(MSDS) before using.

Storage Precaution

- Stored between 1-25°C and keep out of sunlight.

How to seal :



1. Preparation the joint and application surface
2. Insertion of back-up material
3. Application of masking tape
4. Primer application
5. Filling and extrusion of silicone sealant from caulking gun
6. Tooling
7. Removal of masking tape
8. Curing

Primer Selection :

Primer used as base coat to improve the adhesion properties of silicone sealants on various materials. Shin-Etsu offers a line up of primers to enhance the durability of application area.

Materials	Primer	Appearance	Drying time (@ 20c)	Quantity /m ²
Glass/Metal/Enamels/Tiles/Plastics	Primer-C	Clear yellow liquid (Mineral Spirits)	> 15min.	35 g.
Concrete/Stones/Marble/Timber	Primer-MT	Clear liquid (Toluene/ Isopropanol)	> 30min.	200g.
Plastics	Primer-T	Clear liquid (Toluene/ Isopropanol)	> 15min.	50g.
Glass/Metal/Enamels/Tiles /various surfaces/Plastics	Primer-AQ-1	Clear yellow liquid (n-Hexane)	> 30min.	50g.
Plastics	Primer-D-2	Clear liquid (Toluene/Butanol/Etahnol)	> 30min.	100g.



Shin-Etsu Silicone

- Select a primer suitable for the construction materials being used.
- Clean and dry the application surface immediately before primer application
- Apply primer by brush or sprayer with suitable surface size of joints. Make sure that primers applied uniformly and covered entire surfaces
- Allow the primer to dry completely before application of sealant
- After primer application, the unused primer must be sealed and stored in ventilated cool area which is not exposed the sunlight
- Do not touch the primer treated surfaces. Primers are flammable and should be stored only after taking appropriate precautions

Limitations :

- Do not use for structural glazing
- It may cause corrosion and discoloration on galvanized iron, zinc-coated steel ,copper brass, limestone , cement, concrete, brick, marble and other porous materials, etc.
- Appropriate for movement joints maximum $\pm 25\%$
- Before using, the prior test on materials are recommended
- It can not be used as aquarium sealing and interior fire stop system applications.
- Do not use with reflective coated mirrors
- Do not use with direct food and drinking water contact application

Primer Packing

Primer Type	Packing	UN.No.
Primer-C	100G / 250G. 1KG	UN 1133
Priemr-AQ-1	250G./ 1KG 18KG	UN 1866
Primer-T	100G/1KG	UN 1866
Primer-MT	100G/1KG 16KG	UN 1866
Primer-D-2	100G/1KG	UN 1133

All primers are hazardous and flammable materials



Shin-Etsu Silicone

Shin-Etsu Silicones (Thailand) Limited

Head Office : 7th Floor, Harindhorn Tower, 54 North Sathorn Road, Silom, Bangrak , Bangkok 10500

Tel. 02-6322941 Fax., 02-6322945

- The data and information presented may not be relied upon represented values. Shin-Etsu reserves the right to change such data in whole or in part, including product performance standards and specifications without notice.
- Users are solely responsible for making preliminary tests to determine the suitability of products for their intended uses. Statements concerning possible or suggested uses made herein may not be relied upon, or be constructed, as a guaranty of no patent infringement.
- The silicone products describes herein have been designed, manufactured and developed solely for general industrial use only, such silicone products are not designed for, intended for use as, or suitable for medical surgical or other particular purposes. Users have sole responsibility and obligation to determine the suitability described herein for any applications, to make preliminary tests and to confirm the safety for their uses.
- Users must never use the silicone products describe herein for the purpose of implantation into the human body and/or injection into humans.
- Users are solely responsible for exporting or importing the silicone products describe herein, an complying with all applicable laws, regulations, and rules relating to the use of such products. Shin-Etsu recommends checking each pertinent country's laws, regulations, and rules in advance, when exporting and before using the products
- Copyright belongs to Shin-Etsu Chemical Co,Ltd